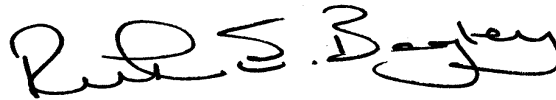


Date of issue: Wednesday, 6 April 2016

<b>MEETING</b>	<b>LOCAL ACCESS FORUM</b>
<b>DATE AND TIME:</b>	THURSDAY, 14TH APRIL, 2016 AT 6.30 PM
<b>VENUE:</b>	MEETING ROOM 1, CHALVEY COMMUNITY CENTRE, THE GREEN, CHALVEY, SLOUGH, SL1 2SP
<b>LOCAL ACCESS FORUM SECRETARY (for all enquiries)</b>	JACQUI WHEELER, RIGHTS OF WAY OFFICER 01753 477479

NOTICE OF MEETING

You are requested to attend the above Meeting at the time and date indicated to deal with the business set out in the following agenda.



**RUTH BAGLEY**  
Chief Executive

AGENDA

PART 1

<u>AGENDA ITEM</u>	<u>REPORT TITLE</u>	<u>PAGE</u>	<u>TIME ALLOCATED</u>
1.	Apologies		(2 mins)
2.	Welcome and Declarations of Interest		(2 mins)

(Members are reminded of their duty to declare personal and prejudicial interests in matters coming before this meeting as set out in the local code of conduct)

<u>AGENDA ITEM</u>	<u>REPORT TITLE</u>	<u>PAGE</u>	<u>TIME ALLOCATED</u>
3.	Minutes of the last meeting held on 16th December 2015	1 - 8	
4.	Matters Arising (other than those on the agenda)	9 - 12	(10 mins)
5.	Canal Basin Interim Scheme Update <ul style="list-style-type: none"> <li>• Interim Proposal Progress</li> <li>• SRP and Long term Regeneration</li> <li>• Parks Integration</li> </ul>	13 - 16	(10mins)
6.	Summer Site Visits <ul style="list-style-type: none"> <li>- Schedule of visits</li> <li>- Actions</li> </ul>	17 - 20	
7.	Joint LAF Meeting 8th March 2016 <ul style="list-style-type: none"> <li>• SMART M4 scheme</li> <li>• LAF members training</li> </ul>	21 - 24	(10mins)
8.	Transport Schemes Design - Updates		
9.	Next Meeting		

#### Press and Public

You are welcome to attend this meeting which is open to the press and public, as an observer. You will however be asked to leave before the Committee considers any items in the Part II agenda. Please contact the Democratic Services Officer shown above for further details.

The Council allows the filming, recording and photographing at its meetings that are open to the public. Anyone proposing to film, record or take photographs of a meeting is requested to advise the Democratic Services Officer before the start of the meeting. Filming or recording must be overt and persons filming should not move around the meeting room whilst filming nor should they obstruct proceedings or the public from viewing the meeting. The use of flash photography, additional lighting or any non hand held devices, including tripods, will not be allowed unless this has been discussed with the Democratic Services Officer.

**Local Access Forum – Meeting held on Wednesday, 16th December, 2015 at the The Cycle Hub, Brunel Way, Slough**

**Present:-**

**LAF Members**

David Munkley (Chair)  
Councillor Satpal S Parmar  
Andy Packer  
Tony Haines  
Ken Wright  
Councillor Roger Davis

**Observers**

Arnold Richardson (Colnbrook Parish Council)

**Officers, Slough Borough Council**

Gerald Pleace  
Parks Development Officer  
Jacqui Wheeler  
Rights of Way Officer  
Sing-Wai Yu  
Team Leader Highways Maintenance & Asset Management

**196. Apologies**

Trevor Allen  
Toby Evans

**197. Welcome and Declarations of Interest**

None

**198. Minutes of the last meeting held on 16th Sept 2015**

Minutes of the last meeting held on 16<sup>th</sup> September 2015 were approved as an accurate record.

**199. Matters Arising (other than those on agenda)**

JW directed members to the action list in the papers and the updates therein.

Linear Park –

Members reviewed the current condition of the path from recent photos and noted the encroachment and drainage problems adjacent to the stream and

## Local Access Forum - 16.12.15

Cricket Ground. JW described the problem with vehicular use of the path churning the surface at the crossover for the fishing lake.

JW explained that Sustrans is currently favouring a sealed surface on all new cycle routes, even through this type of environment due to long term maintenance costs being reduced. A possible surface that could be used should it prove to be cost effective is Flexi-pave, which is a mixture of recycled tyre rubber and aggregate mixed with a polyurethane substance. This material is porous, hard wearing, slip resistant and flexible acceptable for both horse riding and cycling and walking. JW will make further enquiries about cost.

DM felt the path should reasonably be maintained to allow two people to walk side by side.

## 200. Horizon Scanning

### Joint LAF Chairs Meeting

Various cross boundary issues were discussed at the meeting including;

- the SIFE site in Colnbrook. Though the Inspector has made her report to the Secretary of State, there is unlikely to be a final decision made on whether or not this goes ahead until after the decision on Heathrow expansion has been taken.
- Langley walking/cycling routes to Langley Park/NCN 61. All agreed that the paths to Black Park and Langley Park from Slough are not maintained very well with lack of signage leading to confusion for users. JW had met with the Row Officer of Bucks CC which is now outsourced as a service. There is no money available to maintain the NCN route, but agreed it was definitely required. It was agreed that Bucks Row Officer would make a bid for funding, but the outcome was a freeze on all "unnecessary expenditure" for the foreseeable future. Slough has agreed to source appropriate signage at Trenches Bridge and other locations along the route to Langley Park to improve the user experience. This could possibly be funded from next year's budget.
- Rights of Way in Bucks. TH feels that the paths in Bucks are not well maintained and there is great potential for walking routes to Langley and Black Park eg; bridleway from Middlegreen to George Green. JW agreed to investigate and forward any problems to Bucks Row team. These routes could be included as part of next year's LAF Summer Site visits.

### SMART Motorways Scheme

## Local Access Forum - 16.12.15

JW referred members to the report in the papers explaining the current situation. Members discussed the possibility of asking for more mitigation for the inconvenience of closing the Old Slade Lane, Oldway Lane and Upton Court Park Bridges as BucksCC are doing. All agreed the disruption is going to be considerable. JW will revisit each bridge and list all possible mitigation to be asked of Highways England.

SWY queried vehicular use of Oldway Lane Bridge by Thames Water. Site visits confirm this is no longer used for site access by TW as they have an access road via the Jubilee River south of the M4.

The scheme is lengthy but JW stated the intention to get further mitigation requests submitted before the examination period ends at the beginning of March 2106.

### Big Pathwatch

JW reported that the latest Rambler's reports have not indicated any defects on Slough paths. John Keegan, Footpath Officer for Windsor District Ramblers, reported that Head Office have said there is a difference of opinion on the effectiveness of the Big Pathwatch project. Most of the surveying has been done by volunteers, not long standing members of the Ramblers. Though John thinks the project has been successful there's an obvious variation in the expectations of surveying volunteers concerning the condition of the paths; surface and signage etc, despite initial training disseminated by the Ramblers.

The main driver for the Big Pathwatch is the looming cut-off date of 2026, though JW questioned this as the paths being surveyed are already recorded. JK thought it was more of a recruitment exercise for the Rambler's because the usefulness of feedback is questionable due to the levels of variation in what is seen as a defect. JK confirmed the majority of paths around the periphery of Slough have been walked and urged members to view the Ramblers website for more information.

### Slough Local Plan Consultation – Call for Sites 8<sup>th</sup> January to 19<sup>th</sup> February 2016

JW highlighted this consultation which is asking for suggestions for new sites suitable for development or redevelopment in the following categories; housing, employment, open space or community uses. Members discussed the sites already allocated in the Local Plan where the potential use could involve improvements to access for open air recreation, such as; informal nature reserves. One such site is the land to the west of Hollow Hill Lane, Langley.

TH was certain that the land to the east of Parlaunt Road possibly known as "Gypsy Field" was placed into the Colne Valley Park but he has been told by CVP CIC that the records have been lost. Members discussed the history of this land in particular and the fact that it forms a buffer between Slough and

## Local Access Forum - 16.12.15

London. It was also noted that there's a high probability that there is informal access (eg; dog walking) taking place now on some land in private ownership such as these fields in Langley. He also suggested a workshop style meeting may be beneficial in the future where members could thoroughly look at the borough and identify a wish list of all access opportunities. Members agreed.

DM clarified that the consultation is asking for new suggestions for land other than those already in the DPD Site Allocations document.

**Resolved – JW would circulate the consultation and current DPD site allocations. Members would identify any land in the borough which they feel could be developed as open space for recreational/leisure use or where a useful link path or short cut could be created.**

### 201. Canal Basin and Parks Integration

JW explained progress since the last meeting. She had spoken to Jonathan Edwards of Morgan Sindell of the SRP who explained that negotiations with Travis Perkins over the sale of the land required are looking positive. [NB: It has since been confirmed that a deal has been agreed with Travis Perkins.] A proposal is due to be submitted for pre-application planning advice shortly. JW advised that Jonathan Edwards will be invited to the next meeting to present the scheme to the LAF.

JW showed members the concept drawings she has; however TH stated that these were old concepts. JW made it clear to the SRP that the LAF wants to see interim improvements now specifically the creation of a link path on the northern bank through to Kendal Close. The SRP agreed that these interim proposals are in line with the long term ambition for the regeneration.

Therefore once the funding is sourced and required agreements in place; any works done on this specific proposal will not be abortive and are supported by the overall regeneration plan. Housing and CRT have both given the necessary approval for the re-alignment of the fencing and the creation of a path being placed on the actual bank, though CRT do not currently want to dedicate the route as a public right of way. The extent of clearance work on the bank is greater than originally envisioned with associated elevated costs.

It is possible that funding could be secured through the Tesco Community Fund which JW is following up dependent on meeting the criteria. TH stated that a future commitment to the widening of the path adjacent to the Tiling Co. should be included in any bid for funding from an external source and he firmly stated his concern that this narrow strip is widened out to the desired 4-5m width. He also felt that the LAF needs to recommend a significant increase in the amount of public open space around the Basin in any plans that are put forward. JW stated that the narrow section alongside the Tiling Co. is shown in the long term plans as being a wide public access path. All agreed that the LAF continues to push for the interim improvement as discussed within the current constraints.

## Local Access Forum - 16.12.15

AP asked if the flexi-pave surfacing could be used for this new path. JW agreed to look into it.

### Bloom Park S106 Improvements

GP will provide drawings of the scheme proposed for LAF comments. As they have already been out to consultation 3 times, any comments must evaluate the actual scheme not bring forward new ideas.

He confirmed there will be at least three links from the Park to the canal and a circular path within the Park.

**Resolved –That the northern canal path interim project needs to be implemented in spite of the progress with the long term Basin Regeneration. Actions to be taken in accordance with this resolution and the above minutes.**

## 202. LAF Members Training Requirements

Training for LAF members has been discussed at RBWM LAF and about half Bracknell LAF members would like some training dependent on what level it is set at.

The Appointing authorities are happy to fund training if provide a venue if the details could be agreed and members commit to attend. JW referred to the training previously provided by IPROW in a morning session. Presently there seems to be sufficient interest to justify a whole day's training with Slough, RBWM and Bracknell alone.

Approximately 3/4 of members were interested in attending, providing the training had an urban perspective where necessary and the changes due to the Deregulation Act are incorporated.

**Resolved- JW will contact RBWM and Bracknell LAF officers to put together a suitable training programme for a full day and source a suitable training provider.**

## 203. Definitive Map Modification Order - BRN

JW updated members on the Definitive Map Modification Order for the bridleway to be added known as Blandford Road North in Langley. The bridleway will be Bridleway 93. The Order received 5 objections which have not been withdrawn, so the Order will be submitted to the Planning Inspectorate who will decide if it will be dealt with by either an inquiry or written representations. The objections are concerned with the width of the way and the status of the way. JW would send TH a copy of this Order again and update members at the next meeting.

**204. Actions List - Summer Site Visits**

Potential Claims – Wexham Row

JW handed out updates on all the items as per the Summer Site Visit Action List. Discussions on improvements to the walking and cycling routes and NCN61 towards Langley Park are minuted under Horizon Scanning (item no. 200).

JW confirmed she has sent copies of the Bucks County Council user evidence form and suitable maps to Trevor Allen so he can start gathering user evidence for this route via the allotment users at Cherry Orchard.

Actions from previous meeting are on-going including the following;

- Draft mailshot letter for wexham row and for dis-used railway row
- Investigate possible use of FB and Streetlife Slough

**205. Transport/LSTF Schemes/Designs/Updates**

No response has been received yet to the LAF's 2<sup>nd</sup> letter regarding the A355 Copthorne R/bout and A332 Windsor Road Corridor schemes. JW agreed she would chase for an update on these.

Leigh Road Bridge –

The area around the old bridge has been re-landscaped and the surface will be dressed with a buff colour. The TRO to restrict the motorised vehicular use of the bridge remains outstanding. Members noted the likelihood of the old bridge being used is less as cyclists on the main carriageway have to veer off-line on the northbound approach to use it. Members think users need a reason to use the old bridge now even though it is safer. JW informed members that seating has been requested by the Council but the developers are reticent about spending further money.

Pavement Parking Scheme

TA had previously requested that this issue be kept on the LAF agenda. TH said that Rochford Gardens will be included in the next phase.

**AOB:**

DM reminded all to think about training requirements and any site visits they would like to go on and forward their suggestions to JW. On this prompt TH suggested that the towpath be re-visited to look at the cross boundary issues with S Bucks and BucksCC and also any potential joint issues with Hillingdon.



**Local Access Forum - 16.12.15**

**206. Next Meeting**

Provisional dates for next three meetings are;

6.30pm, Thursday 14<sup>th</sup> April 2016 at Chalvey Community Centre, The Green,  
Chalvey

6.30pm Weds 27<sup>th</sup> July 2016

6.30pm Thursday 10<sup>th</sup> November 2016

(Note: The Meeting opened at 6.30 pm and closed at 8.40 pm)

This page is intentionally left blank

ACTION LIST FOR LAF Date: 09 February 2016

Reference from Minutes	Action Detail	How achieved	Outcome
LAF Mins 16.09.15 - 190	Do informal consultation for possible closure of FP35b		
LAF Mins 16.09.15 - 190	Door knocking for possible closure of FP35b – arrange with Nahid Moghul, Project Officer NET		
Canal Basin LAF Mins 16.09.15 - 190	Email Joe Carter to find out what plans there are for the Basin development	Email sent 03.11.15	No response received, not chased. Re-structuring and merge of Highways and Transport in April 2016
	Chase Ruth Bagley for response to the LAF letter sent	Drafted 2 <sup>nd</sup> letter chasing response	Draft to be agreed by LAF – see papers
LAF Mins 16.09.15 - 191	JW agreed to ask the Parking team why Haymill is not being consulted on as WS had been assured it was a prime candidate and the LAF had agreed	To do	
LAF Mins 16.12.15 – 200 Horizon Scanning – SMART M4	SMART Motorway scheme – list of mitigation for closure of row and impact on network to be forwarded to HE	Costed list of mitigation for Slough row given to HE at meeting on 5 <sup>th</sup> February 2016	No response from HE yet on Slough requests. However BucksCC requests for Old Slade Lane mitigation were rejected by HE. Inspectors decision awaited and SBC pro mitigation requests shown on drawings.
LAF Mins 16.12.15 200 Horizon Scanning – Local Plan Call for Sites Consultation	JW to circulate the consultation and current DPD Site Allocations doc. Members to feedback with any land they feel should be included. JW to send collated LAF response to Planning by deadline 19 <sup>th</sup> Feb 2016	Consultation circulated on 27.01.16.	No responses from LAF members so submitted the 2 x sites identified Gypsy's Field and Dis-used Rail Line, Colnbrook.

LAF Mins 16.12.15 – 201. Canal Basin and Parks Integration	Chase Parks team for drawings of the scheme to improve Bloom Park including connections to the towpath	Emailed GP on 09.02.16	Design drawings available for comment on the detail. To be discussed at meeting.
LAF Mins 16.12.15 – 201. Canal Basin and Parks Integration	JW follow up the Tesco Community Fund bid	JW submitted details and costs for the clearance works required to Groundwork and discussed the higher costs involved. Groundwork has confirmed that if taken as Phase 1 of the scheme the application can still be considered for a grant and the path constructed later.	16.03.16 - Groundwork confirmed that the Northern Bank Canal scheme will receive a grant of £8K!!! ☺
LAF Mins 16.12.15 – 201. Canal Basin and Parks Integration	JW to investigate the Tiling Co. site to see if vacated and if yes, then to contact CRT to ask if path on this section can be widened.	Site – 10.02.16	Tiling co. site is now empty. Email from CRT confirming work can be done to widen path.
LAF Mins 16.12.15 – 201. Canal Basin and Parks Integration	Investigate use and cost of Flexi-pave surfacing	JW in contact with KBI-UK	
LAF Mins 16.12.15 – 202. Training	JW to contact Bracknell and RBWM officers to prepare a draft training programme for a day and source suitable supplier	To do	
LAF Mins 16.09.15 – 192 & 16.12.15 – 204. Actions List Summer Site Visits	Draft Mailshot letter for wexham row & Dis-used railway land and get on Facebook and Streetlife Slough to ask for peoples experiences		
LAF Mins 16.12.15 – 204. Actions List Summer Site Visits	Identify list of locations/routes for Summer Site Visits and liaise at Joint LAF Chairs Meeting for any visits to be arranged.	List of visits put together	To be discussed at meeting

06 April 2016

## Slough Local Access Forum

Ruth Bagley  
Chief Executive  
Slough Borough Council  
St Martins Place  
51 Bath Road  
Slough  
SL1 3UF

Replies to: Jacqui Wheeler,  
Officer to Slough Local Access Forum  
Highways Engineering  
Slough Borough Council  
St Martins Place, 51 Bath Road  
Slough, SL1 3UF

Tel: 01753 477 479  
Fax: 01753 875 660  
Email: [Localaccessforum@slough.gov.uk](mailto:Localaccessforum@slough.gov.uk)  
Ref: LAF Linear Park/Ditton Park Cycle Path

Dear Ruth,

I am disappointed to report that the Slough Local Access Forum has still not received a response from you to our letter dated 30<sup>th</sup> November 2015.

We would now like to hear from you that the Council has considered our concerns and will take responsibility for the Linear Park in Slough by ensuring it is afforded sufficient funding as an important off road sustainable transport route. In the first instance this means a one off investment required to ensure the path condition is brought back up to standard and thereafter a suitable revenue budget to allow a dedicated maintenance regime.

To reiterate the sentiments expressed previously; the Local Access Forum feels that this route does not get the recognition it deserves as a major off-road leisure and commuter route and that the Council should be showing that it takes sustainable routes seriously. These are the routes which allow people the opportunity to improve their health and well-being and therefore reduce obesity and health problems in our local communities.

We would very much expect a response to this our second letter on this matter.

Yours sincerely,



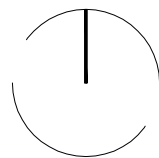
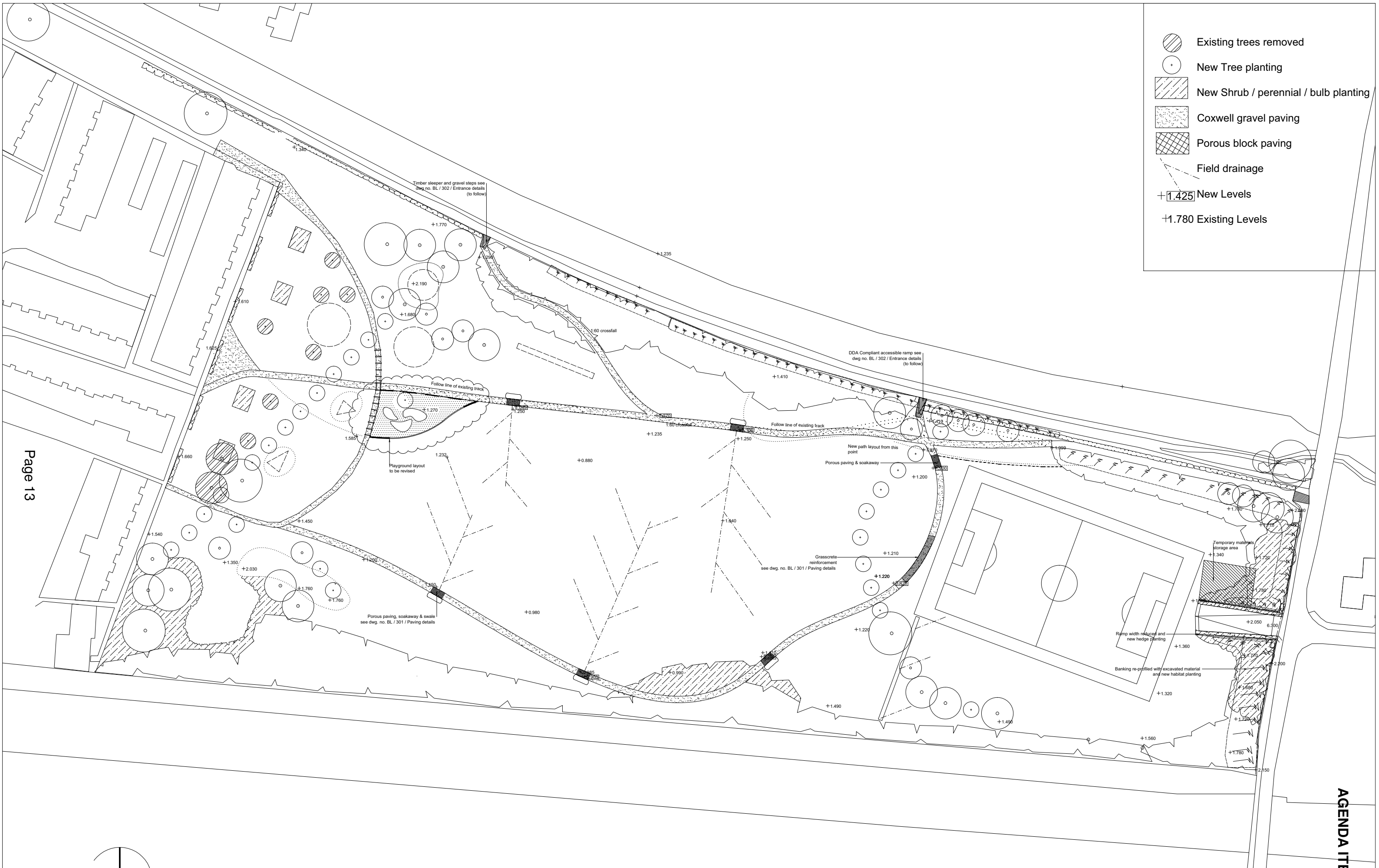
**David Munkley**

## **Chair 2015, Slough Local Access Forum**

- cc. Councillor Rajinder S Sandhu, Upton Ward, Slough  
Councillor Rayman Bains, Upton Ward, Slough  
Councillor Wal Chahal, Upton Ward, Slough  
Anthony Hurst, Principal Rights of Way Officer, Royal Borough of Windsor & Maidenhead  
Peter Challis, Sustrans Area Manager

***This letter constitutes formal advice from the Slough Local Access Forum. Slough Borough Council is required, in accordance with section 94(5) of the Countryside and Rights of Way Act 2000, to have regard to relevant advice from this forum in carrying out its functions.***

- Existing trees removed
- New Tree planting
- New Shrub / perennial / bulb planting
- Coxwell gravel paving
- Porous block paving
- Field drainage
- +1.425 New Levels
- 1.780 Existing Levels



**Amey plc**

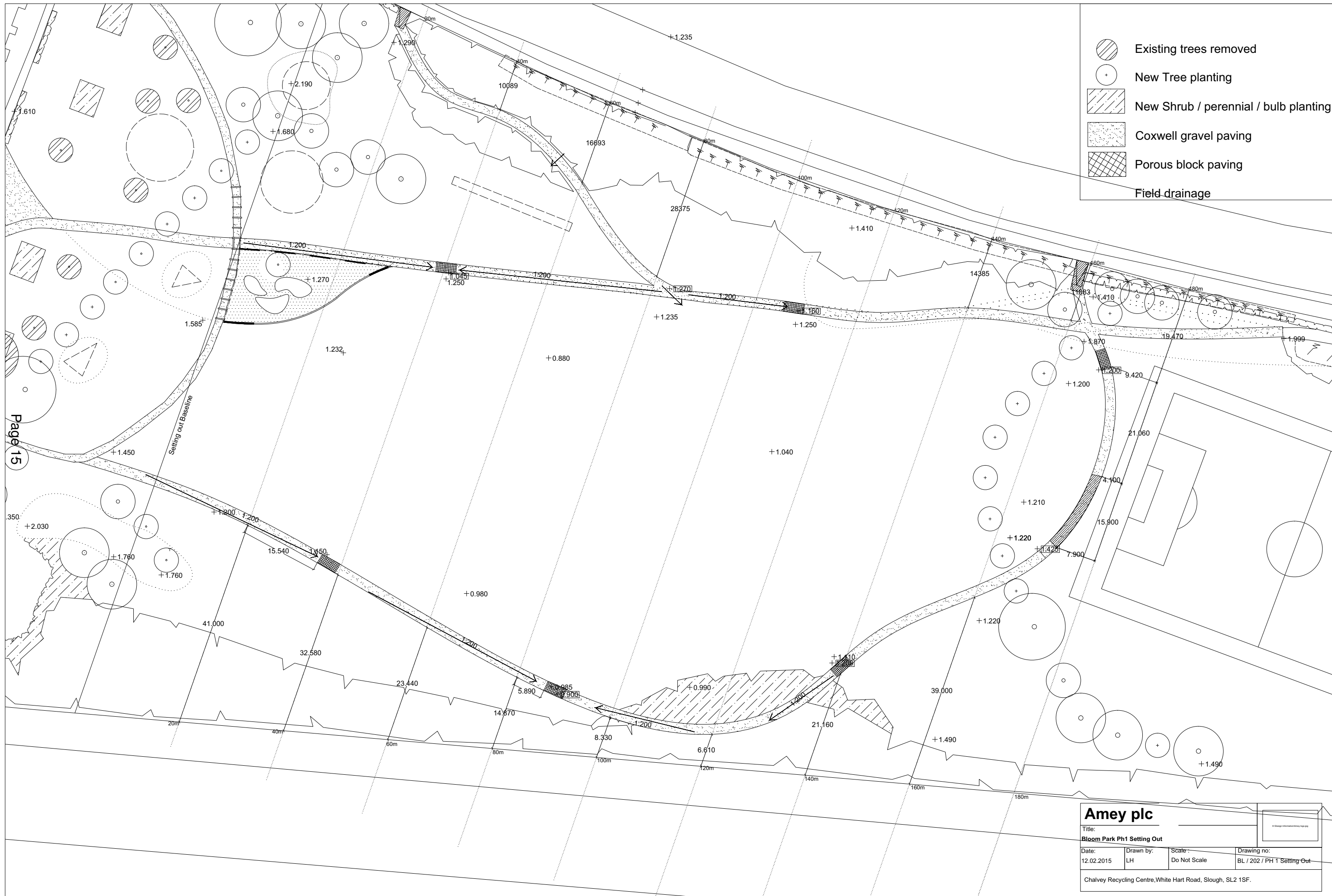
Title:  
**Bloom Park Masterplan**


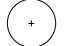



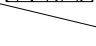
Date: 12.02.2015	Drawn by: LH	Scale: Do Not Scale	Drawing no: BL / 201 Masterplan Rev A
---------------------	-----------------	------------------------	--

Chalvey Recycling Centre, White Hart Road, Slough, SL2 1SF.

This page is intentionally left blank





-  Existing trees removed
-  New Tree planting
-  New Shrub / perennial / bulb planting
-  Coxwell gravel paving
-  Porous block paving
-  Field drainage

Page 15

Setting out Baseline

<b>Amey plc</b>			
Title: <b>Bloom Park Ph1 Setting Out</b>			
Date: 12.02.2015	Drawn by: LH	Scale: Do Not Scale	Drawing no: BL / 202 / PH 1 Setting Out
Chalvey Recycling Centre, White Hart Road, Slough, SL2 1SF.			

This page is intentionally left blank

Summer site visits Action List– 2015

Location	Details	Photos	Actions
<p><b>Dis-used Railway land off Old Bath Road, Colnbrook</b> Thursday 19<sup>th</sup> June 2014 6.30pm</p>	<p>Explore route through un-used railway land between Old Bath Rd and Poyle Industrial Est. Consider potential to be a public right of way</p>		<p>LAF decision to push for this route to be a PROW. Actions required;</p> <ul style="list-style-type: none"> <li>- Contact landowner</li> <li>- Ask Parish Council support</li> <li>- Advise against any illegal development use and/or planning apps</li> <li>- Contact local residents to gather user evidence</li> <li>- Ask for this land to be included in the DPD allocations/Local Plan to restrict development and ask for nature reserve and PROW status</li> </ul>
<p><b>Langley Rail Station along the canal towards Langley Park</b> Friday 15<sup>th</sup> May 2015 6.30pm</p>	<p>Using public rights of way and the NCN – this is a good chance to see this cross boundary issue. Meet at: Langley Rail Station car park.</p>		<p>Contact Bucks CC and Bucks LAF to let them know of concerns about the walking and cycling routes towards Langley Park from the canal towpath and the NCN route. Ask them for joint working and the resurrection of the LA partnership working along the canal corridor. <b>Met Bucks Row Officer on 15<sup>th</sup> Oct to discuss options. I have agreed to source wooden signage to place at Trenches bridge and further along path to Langley Park. Bucks Row is outsourced and she agreed to put a bid in to fund surfacing repairs on BR/NCN route, however, County Council have put freeze on all unnecessary expenditure at the moment. Sustrans have also emailed asking for this path to be</b></p>

<p><b>Colnbrook – north side of the Colnbrook By-Pass (land known as Tanhouse Pits)</b> Thursday 11<sup>th</sup> June 2015 at 6.30pm</p>	<p>circular bridleway route which leads to Iver (possible SIFE site) Meet at: Riverside Transport Café on the Colnbrook Bypass</p>		<p><b>restored.</b> Keep on the LAF agenda for update on the results of the enquiry taking place in Sept 2015. <b>No news, only that decision unlikely until Heathrow expansion decided or not.</b></p>
<p><b>New Cycle Hub Visit</b> Monday 6<sup>th</sup> July 2015 at 6.30pm</p>	<p>Meet with Grant Wildman project manager and get insight into the layout and how the project will run. It's vision for the future to become a focus for cycle maintenance &amp; training.</p>		<p>Keep communication with Grant and ask to hold a future LAF meeting at the Hub.</p>
<p><b>Harmondsworth Moor</b> Tuesday 28<sup>th</sup> July 2015 at 6.30pm</p>	<p>On the other side of the M25 near to Colnbrook – part of the Colne Valley Park and might give insight into lack of access across the M25. Meet at: Waterside Carpark, Tarmac Way off the A4</p>		<p>No action</p>

**Wexham right of way between Stoke Road and Wexham Road**  
 Thurs 6<sup>th</sup> August 2015 at 6.30pm

(Just north of Cherry Orchard allotments, situated in South Bucks) which has recently been blocked and which I am trying to contact the landowner about. The route is still being used despite the landowner having blocked both ends of the path.  
 Meet at: The entrance to Slough Crematorium on Stoke Road, Slough



1. Contact the landowner again and try to persuade them to give permissive access to the path as people are still using it despite their efforts and it is H&S risk presently. Giving permissive public access now will not affect their ability to use the row dedication as a bargaining tool in a future planning situation. They can stop the permissive access anytime as it can be arranged on a yearly basis to see how it goes. The horses are no longer on site, but if further livestock are introduced we can arrange for fencing to keep the path separate though many public paths go through fields of livestock. The signage is intimidating and not true.
2. Commence gathering user and historical evidence to support a claim to the Bucks CC row team to claim the path under S53 WCA 1981. Need to get as much user evidence as possible showing at least 20 years continuous use.
3. Contact the Ramblers Association about the letter they sent in the 1980's to the Wexham Court Parish Council asking them to use the path to help keep it open. **Emails rec'd but no records available.**
4. Contact the Allotment committee at Cherry Orchard to see if they can

			<p>complete user evidence forms and give statements. <b>Forms and maps given to Trevor (treasurer)</b></p> <p><b>5.</b> Send mailshot to local houses asking for evidence of use <b>Need to draft letter.</b></p>
<p><b>Brook Path</b> 6<sup>th</sup> Oct 2015 at 6.30pm</p>	<p>Starting at Burnham Lane through to Bath Road and south through Cippenham to the Jubilee River. Meet at: One Way section of Burnham Lane outside no. 53 Burnham Lane, SL16LH</p>		<p>Route needs to be promoted and the crossing of the A4 ought to be reviewed. Possible communication with Transport.</p>

LAF CHAIR MEETING – 8<sup>th</sup> March 2016

ATTENDANCE

Local Access Forum	Name
Bracknell Forest LCAF	Peter Radband (Chair) [PR] Graham Pockett [GP]
Bucks LAF	
Mid & West Berks LCAF	Janice Bridger (Chair) [JB] Jan Heard (Vice-Chair) [JH]
RBWM LAF	Peter Thorn (Chair) [PT] Andrew Fletcher (Secretary) [AF]
Slough LAF	David Munkley (Chair) [DM] Jacqui Wheeler (Secretary) [JW]
Surrey LAF	Graham Butler (Chair) [GB]

ACTIONS ARISING FROM THE MEETING

Item	Action / Issue	Action Owner	Outcome
1	Design and consistency of signage across authorities	AF	Consensus of the group was that as the signage designs were laid out in regulation there was not a need to discuss this further.
2	Deregulation training courses	AF	It was agreed that as the Deregulation Act was not finalised it is premature to go on any training courses at the present time.
3	Arrange joint LAF site meeting to visit the Eton-Dorney-Taplow proposed Multi-User Route.	AF / JW	
4	<p>Arrange a joint meeting in the summer time for all neighbouring LAFs with the aim to run some brief training sessions / presentations.</p> <p>ALL to provide suggestions for what training sessions would be best.</p> <p>Ideas:</p> <ul style="list-style-type: none"> <li>• Path claim process &amp; investigation</li> <li>• Deregulation Act impact</li> <li>• PROW basics</li> </ul>	AF / ALL	
5	Provide details of bridge parapet requirements for horse riders	JB	Complete. To be circulated with meeting notes for information to all.

6	Develop wording for LAF annual report proformas to regarding South East LAF Co-ordination	ALL	
---	---	-----	--

### **KNOWN JOINT ISSUES / BOUNDARY ISSUES**

1. Upgrade of footpath to bridleway across the boundary of Wokingham and Bracknell Forest – Bracknell Forest/Wokingham
2. Slough arm of Canal at Langley Park – Bucks/Slough
3. Ditton Park (in hand at present) – RBWM/Slough
4. Multi-user route extension at Bucks – Bucks/RBWM/Slough
5. Slough Intermodal Freight Exchange at Colnbrook – RBWM/Slough
6. Hogoak Lane – Speeding and flytipping issues. This may need to be considered for a width restriction TRO – Bracknell Forest/RBWM
7. M4 Smart Motorway. Currently gearing up for public inquiry.  
*Each authority has developed a response to Highways England. RBWM LAF has requested higher parapets on a bridge to improve horse riding access.*

### **JOINT SITE VISIT SUGGESTIONS**

#### **(Invitations to sit meetings be extended to all neighbouring LAFs)**

1. Proposed upgrade of cross boundary Footpath to Bridleway (*Bracknell Forest/Mid & West Berks*)
2. Eton-Dorney-Taplow proposed multi-use route extension (*Bucks / RBWM / Slough*)
3. Slough Intermodal Freight Exchange site at Colnbrook (*RBWM / Slough / Surrey*). [*Still in planning process – site visit to be organised once further details are available.*]
4. Black Park and Langley Park (*Bucks / Slough*)
5. Ditton Park (*RBWM / Slough*)
6. Swinley Forest – Multi-user and historic aspects of the area. (*Bracknell Forest/RBWM*)



M4 DCO: Improvements needed to Public Rights of Way in Slough		Ref to annotated env masterplan sheet
Bridgeworks	PRoW impact	Works needed/Diversionary route(s)
		but works needed as a result of Recreation Ground overbridge closure and minimise diversion for footpath users.
Old Slade Oldway Lane	3.1km diversion via Colnbrook Wood Lane and Sutton bridge and Jubilee River paths during construction. New bridge higher than existing.	Improved surfacing of BR2a and BR6 and Surfacing works to BR14 from Mercian FP6. (partly within Order boundary, partly Recreation Ground to Wood Lane, use outside: would act as a circular route for bobcat to scrape/plane off existing to 3m Colne Valley Trail users during bridge construction). surface and compact with roller. (All within Order boundary).
		Improvements to diversionary route between Colne Valley Path at Colnbrook and Sutton Lane (Outside Order boundary but only route capable of achieving crossing of the M4 during construction phase).
		At BR14 junction with Wood Lane – new sign needed on existing post to show direction of Jubilee River/Eton Wick. (Within Order boundary).
		Grading and levelling the existing surface of BR9 on south side of M4. Grading and levelling the existing surface of BR9 on south side of M4. (Within Order boundary).
		Improved 3m wide surface for cycling on BR9. (Part with Order boundary).
		Extra maintenance of BR9 to bring back to passable condition following re-opening of Oldway Lane bridge. (Most outside Order boundary but current access for maintenance vehicles will be severed during construction).
Wood Lane	Local diversions from existing bridge to new bridge. (including ramping due to increased bridge height)	Improved crossing point from footway of Wood Lane to continue south from a safety point of view. New signage for bridleway including destination information. (All within Order boundary).
		Improvements required to routes along the Jubilee River: BR84, BR85, FP10 and the cycle way along the Jubilee River including attention in localised areas due to puddling and wear to the surface. (Outside Order boundary but works as a result of Oldway Lane user diversion).
Datchet Road & Recreation Ground	1.9km via Datchet Road and Upton Court Road	Improvements to shared foot/ cycle path alongside Datchet Road with Toucan crossing to link with Upton Court Park Road. (All within Order boundary).
		Improvements to shared foot/ cycle path alongside Upton Court Road. (Outside Order boundary but works needed as a result of Recreation Ground overbridge user diversion).

